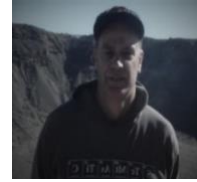




Monthly Newsletter of the *Kern County Mineral Society (KCMS)*

President's Message**James May – KCMS President 2022**

I wanted to first wish everyone a Happy and Prosperous New Year, and let's hope we have an exciting and rocking year. I also hope that everyone is staying safe and guarding their health during these trying times. Please be advised that we should remain face-masked-up for the January General Membership Meeting. We have an exciting presentation scheduled for our upcoming meeting. Connie Fleishauer is going to give a presentation on the powers and properties of crystals. I hope you all can attend.

We have a workshop scheduled for Saturday, January 29th at the Fleishauers. Anita has agreed to give a class on setting gemstones in macramé while many of us will be helping Steve set up some lapidary equipment out on the patio. We do not have a scheduled field trip this month so the workshop is our main event this month.

Please remember that our annual membership dues are due. We did not collect dues last year and we would like a better idea of the membership numbers going forward.

The Mineral Society was contacted by Melissa D. over at Wind Wolves Preserve. Tentatively they are proposing to have their Annual Spring Festival on March 19th and March 20th. We are encouraged to set up a table and show the public some of the exciting items that we are working on and hopefully encourage new membership. We are looking to cover four shifts. Ideally we would like three or four members for each of the shifts. We will have a sign-up sheet at our next General Membership meeting if interested.

On the subcommittee front, we have a bylaws committee meeting scheduled for Friday, January 28th from 9 AM to Noon. Ideally we would like to finish off the bylaws and bring them to the February General Membership meeting. I am also in the process of setting up an audit of 2021 books with Dennis, David, and Jack.

This month's article was provided to me from an old Pseudomorph article from back in the 1990's. I added some new obsidian pictures but it is really just a reprint of the old article. Please remember this is a Club Newsletter so if you plan on going on any short vacations and want to take some pictures and do a short write up that would be wonderful. Anita and Michael took a weekend getaway out to Nevada and they are working on an article for the February Pseudomorph.

The next local rock and mineral show is in Ventura in early March. This has typically been a great show and let's keep our fingers crossed that this show goes forward as scheduled.

Finally, January and February is a wonderful time to visit Quartzsite and Tuscan. If you have not visited these events, it is totally worth it. The Pow Wow Gem and Mineral Show is scheduled from January 19th through January 23rd. There are a lot of vendors selling all kinds of unique minerals. The Tuscan Show is scheduled for February 10th through 13th and this is the Queen Stage Show in the United States. It takes about 8 or 9 hours to drive there so you need to camp out. The show is truly amazing! --- James



Upcoming General Membership Meeting

➤ **Thursday, January 20th at East Bakersfield Veterans Hall at 7:00 PM**

**GENERAL
MEETING**



Next Workshop

➤ **Saturday, January 29th
Steve & Connie Fleishauer's @ 10:00 A.M.
Macramé Stone Wrapping
Lapidary Setup of Workshop**



OBSIDIAN
HOW TO WORK IT



California Rainbow Obsidian



Snowflake Obsidian or Devitrified Obsidian

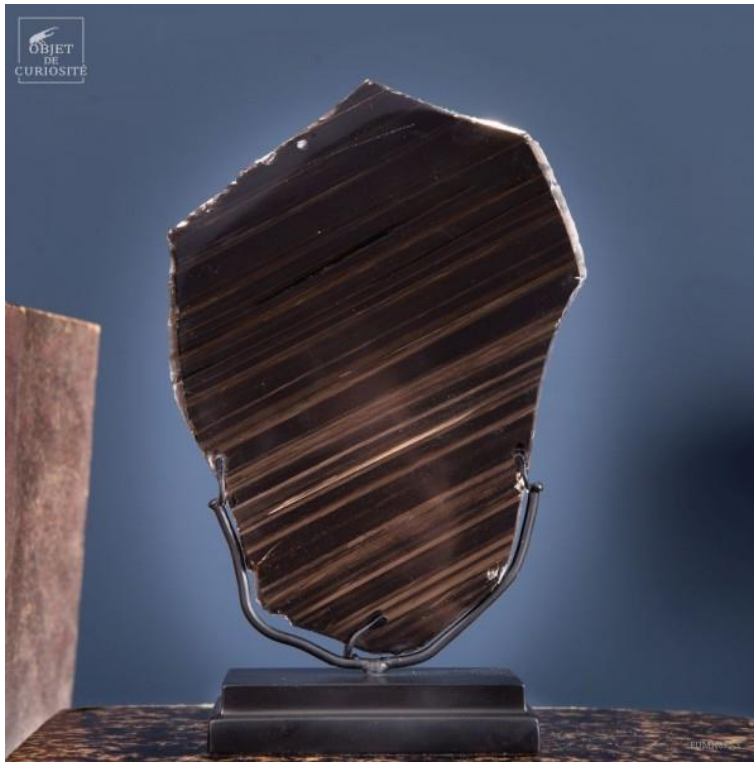
GOLD SHEEN: To get the most out of mahogany gold sheen obsidian, saw with the bands, as if they were a stack of plates and you wish to unstack them. Watch for “fire spots” in gold sheen. It is not plentiful, but opal-like colors do sometimes occur.



IRIDESCENT: There are two types of iridescent obsidian. In cutting both correctly, the orientation of the color is most important. One type of obsidian is banded, and the color lies in the bands. On the unbanded types of obsidian, the surface must be chipped to find the color. The banded type will have several colors or shades, while the unbanded types will have only one color. Cut the banded material parallel to the bands to get the effect. To get rainbow effect, cut the stone at an approximate 15° angle across the bands.



MIDNIGHT LACE: Lace patterned obsidian should be cut across the surface pattern that you desire to reproduce.



RAINBOW OBSIDIAN: It is cut parallel to the flow layers. These can be seen by examining fractured surfaces using an overhead lamp bulb. As these are not always straight, it may be necessary to turn the stone slightly in the saw. Examine each slab wet to see if the correct angle has been obtained.





SAFETY TIP - OBSIDIAN CHIPS! After obsidian is sawed, be sure to bevel the edges all around on your fine-grained wheel to keep them from flaking or chipping. Wear goggles or glasses at all times. If a small chip of glass gets into your eye, it would be very dangerous, and may cut your eye seriously before it could be removed.

GRINDING OBSIDIAN CABOCHONS: Approach your grinding wheel with the material at a slight horizontal angle. If brought straight in, it may be a “shattering” experience as obsidian fractures easily if not worked correctly.



POLISHING OBSIDIAN: Though obsidian is comparatively soft, it is still very important to sand away all scratches before going to the polish. Sanding should always be done wet since obsidian is heat sensitive and very brittle. For the final polish, felt with cerium oxide is the choice. Keep the polishing wheel wet. A dry polishing wheel will result in blisters and scratches. Should you be faceting some particularly gemmy obsidian, try cerium oxide on leucite, but keep it wet.



Obsidian is a material of many uses. In addition to making beautiful cabochons, the iridescent, sheen and rainbow varieties make striking polished contoured specimens. Faceted gemstones and outstanding carvings can also be made of obsidian.



Article taken from the Pseudomorph in April 1992.



Obsidian Dome from Newberry Crater near Bend, Oregon

**UPCOMING ROCK, MINERAL, AND GEM SHOWS**

February 12-13, 2022 – Antioch, CA
Antioch Lapidary Club
Jewelry, Gem & Rock Show
1201 West 10th St., Antioch, CA 94509
Hours: 10 AM – 5 PM
Admission: \$6
Contact: edysnyder@gmail.com
Website: <http://www.antiochlapidaryclub.com>



February 26-27, 2022 – Vallejo, CA
Vallejo Gem and Mineral Society
McCormack Hall, Solano County Fairgrounds,
Vallejo, CA
900 Fairgrounds Dr., Vallejo, CA
Spring Bling 2022
Hours: 10 AM – 5 PM both days
Contact: (510) 377-4545
Website: <http://vjgems.co/>



March 5-6, 2022 – Ventura, CA
Ventura Gem and Mineral Society
Ventura County Fairgrounds, 10 W. Harbor
Blvd., Ventura
Hours: Saturday 10 AM – 5 PM, Sunday 10 AM
– 4 PM
Gems and Minerals, fossils, jewelry, healing
stones, silent auction, exhibits, dealers, kids
activities, lapidary arts demonstrations,
raffle, flea market, plant sale. A successful
and valued South Coast show since 1963. We
are happy to be back again after COVID!
Website: <http://www.vgms.org>

March 11-13, 2022 – Victorville, CA
Hours: 9 to 5 Daily
Victor Valley Gem and Mineral Club
46th Annual Stoddard Wells Rockhound
Market

KCMS CLASSIFIEDS

KCMS is proud to announce the addition of a Classified Ads Section to the Pseudomorph Newsletter!!

Calling on all members who have any items that they want to sell or those looking to buy.

**Rocks, Minerals, Rock Saws, but that's not all!!
We will also accept Lawn Equipment,
Electronics, Homemade Crafts, etc.**

The Pseudomorph Classifieds will not be limited to only rock & mineral related items, but to any items members are looking to sale.

When making a classified ad for the newsletter be sure to include:

- Description of Item
- Asking Price
- Contact Information
- Picture(s)

Pictures are not necessary but will be added if provided. Please send photographs in JPEG (.jpg) format if possible.

Classified Ads for the Pseudomorph are due to the editor no later than the first Thursday of each month, via Email or by U.S. Mail.

James May, Editor
Email geojim9@hotmail.com

If you have any ads you want added to the next Pseudomorph, please email me the details and I will post.

Don't Forget the BREAKFAST CLUB

The first Wednesday of each month, year-round, KCMS Members and occasional guests meet at 8:30 AM at Lorene's Coffee shop at 23rd and Eye streets in downtown Bakersfield. Everybody is welcome to attend!
-- Dalia Hernandez





KCMS Monthly Meeting

Please join the KCMS at 7:00 p.m. on Thursday, January 20th at the East Bakersfield Veterans Hall located at 2101 Ridge Road in Northeast Bakersfield. We hope you can attend, and visitors are always welcome.



Kern County Mineral Society

is a Charter Member of the California Federation of Mineralogical Societies

and is affiliated with the American Federation of Mineralogical Societies



The Kern County Mineral Society, Inc. was organized in 1935 to promote the study of mineralogy and allied earth sciences, to collect and study minerals and rocks, to study and practice the techniques of jewelry making, to promote good fellowship and good citizenship and to promote education in the earth sciences. Membership dues are; \$15 for singles, \$20 for couples.

Pseudomorph Subscriptions

The Pseudomorph is published 10 times a year (September through June) by Kern County Mineral Society, P.O. Box 12305, Bakersfield, CA, 93389-2305. Subscription included with Membership. Non-members \$5.50 per year, Jan. thru Dec., not prorated.

KCMS will email a free .pdf subscription to any high school, college, or university student who wishes to receive it. Just email a request to geojim9@hotmail.com

Articles for *The Pseudomorph* are due to the Editor no later than the first Thursday of each month, via Email, via Facebook, or by US Mail. Please send photographs in JPEG (.jpg) format if possible, and text as Notepad, Word, or other simple text for me to paste and edit.

James May, Editor
Email geojim9@hotmail.com

Facebook: Kern County Mineral Society

Articles in this publication may be reprinted if attribution is given to the author and to *The Pseudomorph, Monthly Newsletter of the Kern County Mineral Society.*



KCMS Officers 2022

President
James May
geojim9@hotmail.com

Vice President
Connie Fleishauer

Secretary
Anita Anderson

Treasurer
Dennis Huggins

Board Members 2021

Pseudomorph Editor
James May
geojim9@hotmail.com

Curator
Steve Fleishauer

Federation Director
Bernie Bentsen

Sergeant at Arms
Dennis Huggins

Field Scout
Bernie Bentsen

Committee Chairs 2022

Kitchen
Sue Kimbriel

Scholarship
David Schaad

Door Hostess
Kay Hevle

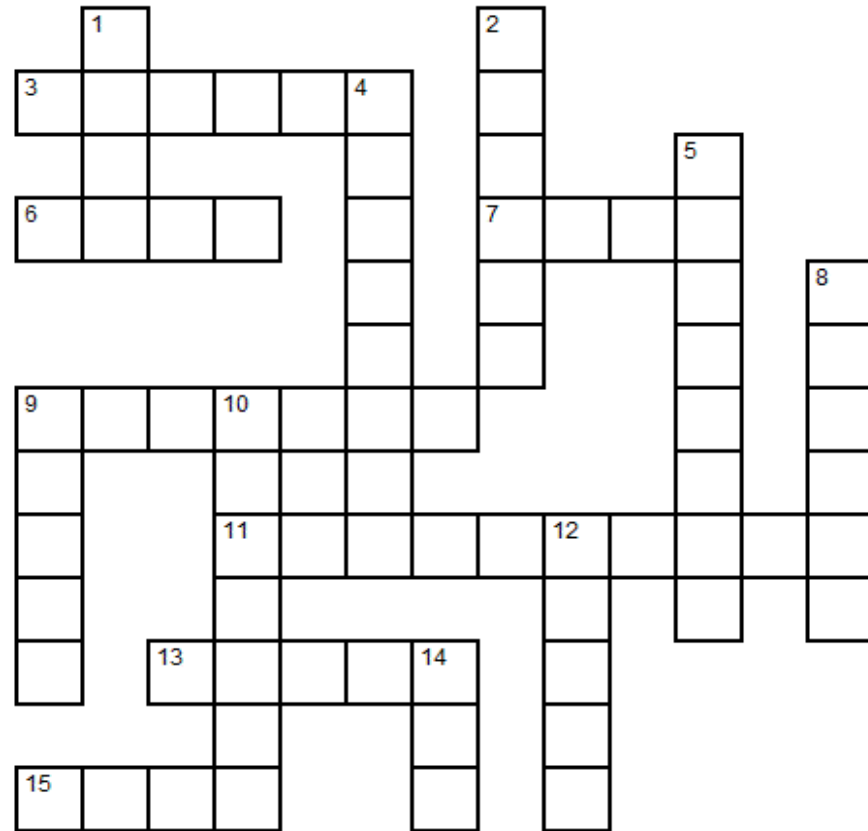
Facebook Editor
Anita Anderson

**FUN, GAMES, & FIELD EXCURSIONS****GUESS THIS MONTH'S MYSTERY SLAB**

Here is this month's mystery slab. Please submit your answer to geojim9@hotmail.com. Each month's winner will be placed in a drawing at the end of the year for a special prize. Last month's winner was Bernie Bensten who correctly identified the slab as Ocean Jasper from Madagascar.



VOLCANOES



ACROSS

- 3. layer of the earth under the crust
- 6. planet with the largest known volcano
- 7. center of the earth
- 9. passage followed by magma
- 11. area in the pacific ocean with lots of volcanic activity
- 13. melted rock inside of the earth
- 15. crack in the earth's crust where volcanic material escapes

DOWN

- 1. melted rock that comes out of a volcano
- 2. Roman god for whom volcanoes are named
- 4. ejection of solid, liquid and gas from a volcano
- 5. the earth's crust is divided into _____ plates
- 8. tall column of water and steam erupting from the earth's surface
- 9. top layer of the earth
- 10. volcano that is currently inactive but may erupt in the future
- 12. side of a volcano
- 14. fine particles of rock dust from an erupting volcano

